



**The Campaign for 259  
Epsilon Theta Fraternity**



259 Saint Paul during the late 1970's

## **The Charter of Epsilon Theta Fraternity**

We, the undersigned, do hereby establish the Epsilon Theta Fraternity of the Massachusetts Institute of Technology. This organization, like the one from which it grew, is established to develop lasting friendships among its members, to help each member develop and realize his or her responsibilities to others, to conceive and carry out in unity plans beneficial to the group, and to provide a flexible format for a living experience.

The nature of this Fraternity shall be shaped by our commonly held beliefs, the foremost of which is the necessity of love and honesty as a basis for human understanding. We believe in the equality of all men and all women, in the dignity and worth of the human person, in freedom of thought, and in the responsibilities of the individual and the community to each other.

To achieve these goals and preserve these beliefs we must commit ourselves to the Fraternity as an institution, to see that it continues to grow and prosper long after our stay. We must commit ourselves to work in unity of purpose with the individuals who comprise the active chapter, to come to know and respect each other's thoughts and needs, and to grow and mature, becoming sensitive human beings capable of giving unselfishly of ourselves and of appreciating the contributions made by others.

We know that an organization such as this Fraternity will change in many ways with time. Yet we trust Epsilon Theta will remain true to these goals and beliefs. Above all, we hope that those who join the Fraternity in the years to come can make it the worthwhile experience it has been for us, and that they will commit themselves, as we do, to its growth and well-being.

## Change, Growth, Leadership

Anyone will tell you that there are some differences between college students today and the classmates you remember from your own years at MIT. Nonetheless, the values and ideals of Epsilon Theta endure. Students seek out Epsilon Theta as a place to grow and mature as part of a close-knit community. Actives learn to balance their commitments to the fraternity as an institution, to the group of people in it, to the individuals in that group, and to themselves.

Epsilon Theta is a unique living group at MIT, the only coed local fraternity. We are a fraternity that does not discriminate based on race, religion, or sex; we learn from our differences. We are lasting proof that men and women can learn and grow together in fraternal love. Epsilon Theta remains a campus leader in promoting a responsible and inclusive lifestyle. All parties at the house are dry, and have been for the last ten years. While looking to our history for inspiration, Epsilon Theta today prepares for tomorrow.



1947 Tech Sing crew: Hood, Kirkpatrick, Hetherington, Brown, Belner, Bracewell, and Latimer



John Archie, Jerry Greene, Carl van Bibber, Linda Mayeda, Harriet Burch, and Scott Fulton

Epsilon Theta is currently preparing for another significant change: MIT's new residence system will require freshmen to live in dormitories. The members of the house have plans for meeting the challenges of attracting and integrating non-resident pledges. The Corporation is doing its part by undertaking a major renovations project. This will greatly improve the appearance and functionality of our house and give us an edge in the increasingly competitive MIT residence system. The Campaign for 259 is an opportunity for alumni/ae to bring the unparalleled living and learning environment that we all enjoyed to future generations.

## Epsilon Theta Today

Alumni/ae from Epsilon Theta have gone on to become inventors, entrepreneurs, writers, engineers, and educators. But we can all remember what it was like back when we were students. All-nighters, final exams, problem sets, papers—how did we ever get through it all? With the lessons we learned around the house, and with the love and support of the friends we found there.



Today's active members are enjoying their years at MIT living in the fellowship of the fraternity. The students at E $\Theta$  today have a variety of interests and activities. The house volunteers as a group with the Friends of Hall's Pond to maintain a local park, and students participate in events like the Walk for Hunger. Lately, members of the house have held leadership positions with Alpha Phi Omega (a national service fraternity), Nightline (MIT's peer counseling hotline), the Solar Car Club, and LSC (the Lecture Series Committee). Interests span a broad range from *The Tech* to drama to the Concert Choir, as well as uniquely MIT activities like the Assassins' Guild.



### Marcus Sarofim, PC '92

*Milton, Massachusetts*

Marcus was born and bred at MIT (his father was a professor in Chemical Engineering). During his early years, he attended MIT day camp. Later, he moved on to majoring in Chemistry, serving as Lieutenant Commander and Pledge Orientation Officer at E $\Theta$ , and acting with the Shakespeare Ensemble. Now he's a graduate student in the Technology and Public Policy Program, working on the global climate problem and serving as the Epsilon Theta Graduate Resident Tutor (GRT).

"Living at E $\Theta$  has been highlight of my MIT experience. The chance to live and grow together is what made E $\Theta$  unique. And the friendships I made at the house over late night tooling and punting remain strong. Looking back, I'm grateful for these friendships and other lasting gifts. I know that being part of Epsilon Theta helped me grow from a shy, insecure freshman to a more confident and social person."



Academically, computer science and electrical engineering remains a popular major for many students. Others choose physics, mathematics, biology, civil and environmental engineering, materials science, or chemical engineering. With a Graduate Resident Tutor, study condition hours, and helpful upperclassmen, Epsilon Theta provides a supportive environment for students as they drink from MIT's educational firehose. Read on to meet some of today's undergraduates and see what Epsilon Theta means to them! It is future students like these who will benefit from being part of our fraternity, built on the years of hard work, vision, and devotion our alumni/ae have contributed.

**Anne Griner, PC '99**  
*Oak Park, Illinois*

Anne is majoring in civil engineering (ask her about her favorite bridge!), with a minor in East Asian Studies. She's enjoyed stage managing for the Shakespeare Ensemble and has served as house manager at EΘ. Anne looks forward to spending the summer in Japan with the MIT Japan Program.

"I was attracted to Epsilon Theta because it had a history I could feel in the house, and it just felt like home. My housemates are my tutors, siblings, friends, confidants, and champions. We're teaching each other about love, patience, and respect. They chose me and I them. We are family and I wouldn't make it through MIT without them."



**Alice Enevoldsen, PC '99**  
*Seattle, Washington*

Her eyes on the stars, Alice volunteers to share her passion for exploring science and astronomy with elementary school students in Cambridge. She also gives planetarium shows at the Museum of Science and is majoring in physics because "it explains ordinary everyday life, as well as the expanding universe and why time stops at the edge of a black hole." Alice is the house historian; her flair for photography comes in handy in capturing snapshots of life at Epsilon Theta.

"Living at Epsilon Theta is like being at home. I'm completely at ease and never have to pretend to be someone I'm not. I'd go crazy if I couldn't live in a community of people I respect and love. Everyone falls apart at some point; at EΘ you have a lot of other people to pick up the pieces and help put them back together."

**Emily Marcus, PC '98S**  
*Austin, Texas*

When something absolutely needs to get done, you can rely on Emily to do a great job and accompany it with a few sarcastic remarks. Emily is majoring in Computer Science and Mathematics. She worked on software that made it possible to register books for the Alpha Phi Omega (APO) booksale online, and recently organized APO Conclave. Emily has been Social Chair and Rush Chair for the house, and currently serves as Commander.

"What I like best about Epsilon Theta is the people and how we live and work together. Taking responsibility for ourselves means that it's up to us to get the heating fixed, shop for a new van, or revise the pledge program. It's great being part of an independent living group; if we have problems or if we think there's a better way of doing something, we get together and figure out how to make it work."



**Russell Zahniser, PC '01**  
*Wellesley, Massachusetts*

If you were to walk into the house and see a colorful giant icosahedron, don't be surprised! Whether it's constructing aliens for the Halloween party, building a house of cards in Lobby 7, or transforming the Dorm into a gateway to Narnia, Russell overflows with ideas that turn duct tape into fun. His plans are to major in Physics and get a teacher's certification.

"I had originally intended to hide in my temporary dorm room during rush and subsist on trail mix and bottled water. But a friend dragged me to EΘ, and I basically never left. I really appreciate the family atmosphere at Epsilon Theta. Eating meals together, tooling together, and seeing each other throughout the day is something I couldn't do without."

## The Need for Renovations

Anyone who has visited the house lately has seen the need for significant renovations. Many alumni have remarked that the house “looks just like it did when I lived there . . . except older.” The last large-scale renovations were completed in the 1960’s, so everything from the windows to the electrical system to the kitchen is showing its age. Our once elegant chapter room is still charming, but distinctly worn around the edges.

Every year, members of the fraternity have painted, plastered, and repaired the house during Work Week. The Corporation has undertaken incremental upgrades, such as safety improvement, re-roofing, and rebuilding the porch. But incremental efforts can no longer keep pace with the scale of work required. The planned renovations are needed to restore the property’s visual appeal and bring the house up to current health and safety codes. We know that EΘ offers students a great opportunity to live in a caring environment, learn about trust and responsibility, and make friendships that last a lifetime. But while these intangibles are the real strength of the house, the physical structure is a visible reflection of the fraternity.



Work Week 1998



1970's Work Week: Bob Lukens, Larry Pestal

*Our chapter house, designed in the Colonial Revival style by architects George Loring and Sanford Phipps, was built in 1896 for Cora and Amos Hatheway. The fraternity acquired 259 Saint Paul in 1924 for \$30,000, financed through \$2000 of alumni donations and three mortgages. Despite a serious fire in 1947, historic details such as the curved glass windows have been preserved. We are now part of the Cottage Farm Historic District of Brookline.*



Nan Robinson, John Archie



## A Continuing Commitment

When enterprising early members of our fraternity purchased 259 Saint Paul, they considered this house a stepping stone to the acquisition of a permanent home closer to MIT and the other fraternities. Since then, members have come to appreciate our tree-lined neighborhood in Brookline. Our good relationships with our neighbors and the town contrast with the current negative atmosphere for fraternities in Boston and Cambridge. And the house van, combined with MIT's SafeRide shuttle service, make the commute to classes convenient. These considerations, in addition to the sky-high Boston real estate market, led the Corporation to decide to invest in renovations to 259 Saint Paul St. rather than seek a different property.



1950 White Rose Formal

President Charles Vest's decision to require all freshmen to live in dormitories starting in 2002 has caused the largest change that MIT's fraternity system has ever experienced. Students and alumni/ae of Epsilon Theta led efforts on several fronts to modify this decision after it was announced, and our plans for a major renovation were put on hold as we focused most of our energy on MIT policymaking. Our constant focus was ensuring that Epsilon Theta would be one of the houses to survive, and thrive, in the new residence environment. With the loss of freshmen now inevitable, the actives have been planning and practicing new recruitment strategies and developing programs to integrate non-residential pledges into the house, as well as working with the MIT administration to make sure that EΘ has a voice in the remaining residence system implementation decisions. We alumni/ae must do our part to support our fraternity during this critical transition period by making sure the house's physical appearance and functionality live up to the fraternity's inner strengths.



Kevin Oliveau, Gretel Anspach, Altaf Carim, Michel Bayloq, Fran Hall, and Craig Fuget

## Making it Happen

After a lengthy search process, the Corporation has retained Gary Wolf Architects for this renovation project. This firm has wide-ranging experience in the renovation of historic properties and in working for non-profit corporations. Their work for the Brookline Music School won the Brookline Preservation Commission's Preservation Award. Gary Wolf Architects also designed the recent renovation project at MIT's Student House. We are confident that they will do an equally great job with our project.



M. Bob, Margie Meyer, Paul Martin, Theresa Byrne

The current condition of the house has been assessed and documented by our architects. They have also prepared preliminary plans for the kitchen and Women's Head. The Corporation has already replaced furniture in the personal rooms and cooperated with our neighbors to repave the parking lot. We are in the process of selecting a general contractor.



Tech Trek 1990: Grant Murray and the PC '89 men

We will celebrate groundbreaking for the renovations at the alumni party of June 2002. The bulk of construction and all interior work will take place during the summer of 2002. All furniture and personal belongings will be put into storage as we will be doing work on nearly every room in the house. Some portions of the exterior work will continue through the fall of 2002. Look forward to our completion celebration during the MIT Alumni/ae Reunion Weekend of 2003!



# Top Ten Renovations

## *1. Renovate the Chapter Room*

The Chapter Room will be completely renovated, including removing the drop ceiling, replacing the walls with real wood paneling and sheetrock, and restoring the fireplace.

## *2. Restore Front Door*

The front door frame and windows have deteriorated over the years. They will be restored along with the leaded glass window over the front door.

## *3. Replace Parquet Flooring*

Current parquet flooring is coming unglued around the house. It will be replaced with strip oak.

## *4. Refurbish/Replace windows*

All the windows in the house will be either refurbished or replaced to tighten them up, increasing energy efficiency. Storm windows will also be added or replaced.

## *5. Renovate the Kitchen*

The kitchen and equipment will be completely redone and brought up to current codes. Use of the space will be optimized. We may expand the kitchen to include the area that is now Cook's Porch to increase space, depending on cost and town approval.

## *6. Renovate Women's Head*

Women's Head (women's shower room) will be completely redone and use of the space will be optimized. Ventilation will also be improved.

## *7. Renovate Guest Head*

Guest Head (the first floor half-bathroom) will be renovated to be made handicapped accessible.

## *8. Utility upgrade*

Electrical and plumbing systems in the



259 Saint Paul Street, 1971

house will be upgraded. The electrical system needs to be upgraded to support the current computer load. Additionally, lighting will be improved around the house. The plumbing system is showing its age and needs to be replaced to avoid the sort of expensive repairs that we have had to make in recent years.

## *9. Foundation repairs*

The mortar in the foundation is crumbling and needs to be replaced.

## *10. Insulation*

While we replace walls, we will insulate the exterior walls of the house. This, along with the improved windows, will greatly increase the house's energy efficiency.

## Costs

The majority of this project will be financed through alumni/ae donations. This will enable the Corporation to keep an amount equal to several years' operating expenses in the bank to cover unanticipated near-term expenses. By keeping our mortgage low, the Corporation will minimize financial risk during the first years of the MIT residence system transition. After the transition years, the low mortgage obligation will mean that the Corporation can save towards the next major renovation project.



John Soltes

The Corporation has budgeted \$600,000 for this project, financed as follows:

\$100,000	Corporation savings
200,000	MIT IRDF mortgage
300,000	Alumni donations
<u>\$600,000</u>	

The renovations costs are estimated as follows:

\$325,000	Interior work (electrical, kitchen, bathrooms, floors)
175,000	Exterior work (foundation, windows, siding)
100,000	Architect, general contractor, miscellaneous
<u>\$600,000</u>	

## The Campaign for 259

Throughout our chapter's history, the Corporation has rarely asked our alumni/ae for donations. It is only after serious deliberation that we do so now. We embark on this campaign with the support of many alumni/ae who have volunteered their time and effort to ensure the success of this undertaking. Response has been enthusiastic, and we have over \$150,000 in early pledges.

The success of this campaign and the renovation project depends on the combined efforts of our fraternity. Looking back at our history, we can admire the resolve of our early alumni who scraped together the financing to purchase 259 Saint Paul. We also remember how determined members kept the house alive during the difficult war years, when many other fraternities closed down. And we are proud that members with the courage of their convictions guided the house through the difficult transition to coedity and break with the national organization. We are confident that the alumni/ae and students of Epsilon Theta will be up to today's challenges, just as they have triumphed in the past.



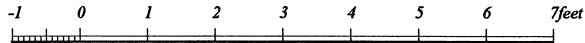
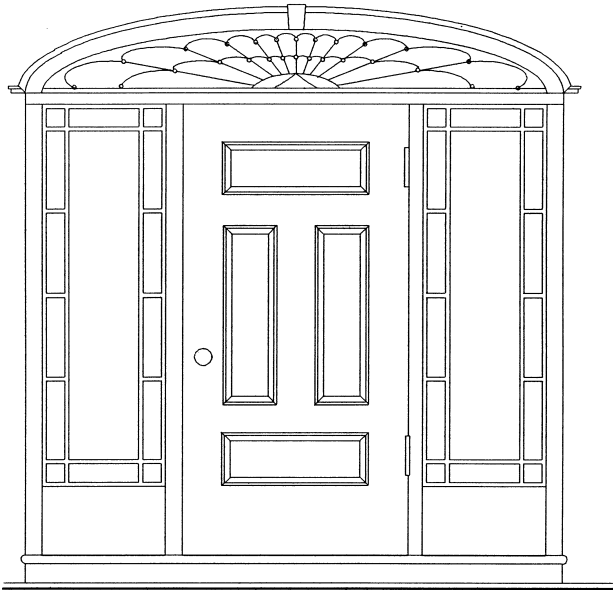
Alumni Party 2000



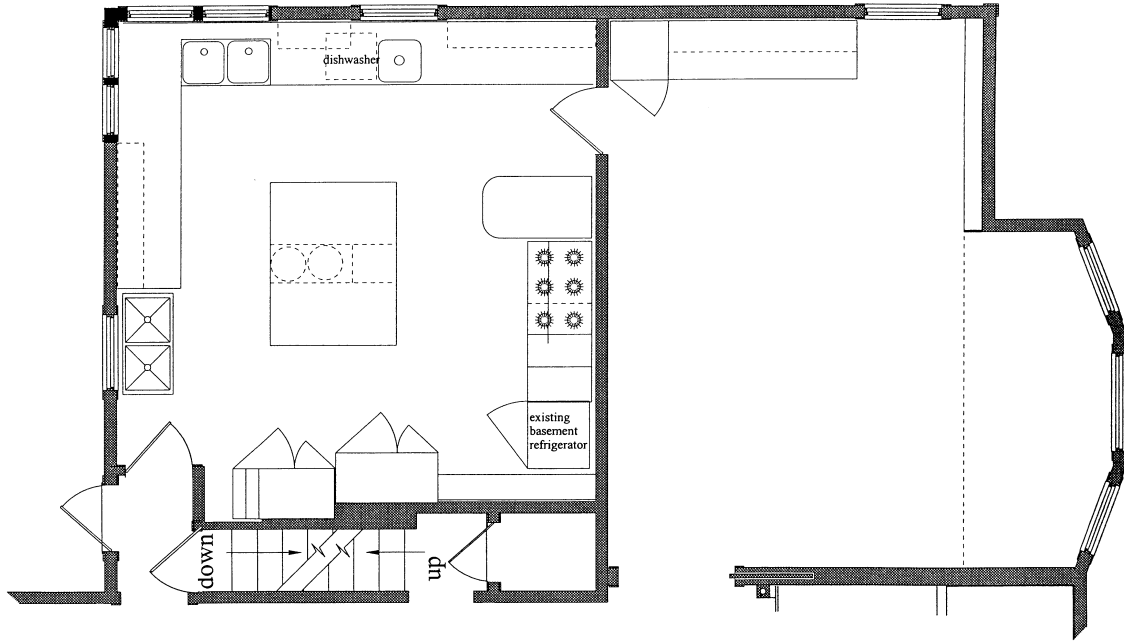
Alumni Party 2000

*We will commemorate the Campaign for 259 with a plaque listing all the members who have made donations. Those who have given \$1000 or more will have their names engraved in special categories. This plaque will be displayed in a place of honor in the newly renovated Chapter Room and will serve as a small token of appreciation to all those who have made this campaign a success.*

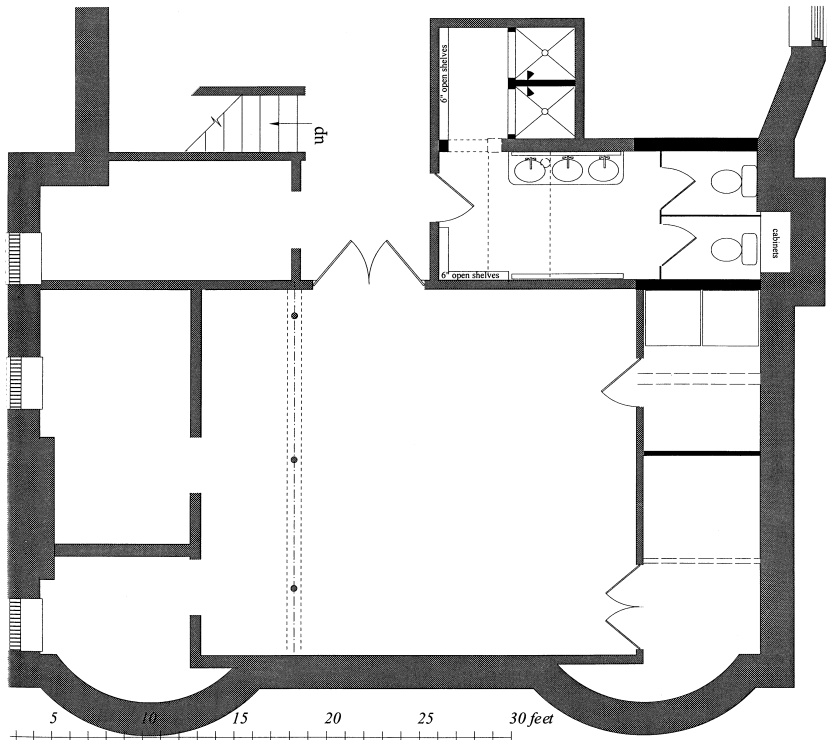
# Front Restorations



# Kitchen Plan



# Women's Head Design



## Working Toward the Goal

Remember waxing the parquet floor? Or cleaning the oven during Saturday morning worksessions? Perhaps there was something about the house that you always wanted to restore, or a pet project you worked on during your undergraduate years. A number of classes have already “adopted” parts of the renovation project and will be fundraising towards these goals. Ask your class captain about what part of the renovations your pledge class will sponsor!

### \$5000

- install a mechanical ventilation system for the Dorm
- build a roof over the back door entrance to the Pit
- new furniture for front rooms
- purchase insulation for walls

### \$10,000

- replace damaged exterior wood siding
- level and replace Pit flooring
- repoint foundation masonry
- renovate the Chapter Room
- renovate Guest Head
- replaster ceilings
- replace front stairs



Washing the bus, 1970's



PC '84 Mission

### \$25,000

- rebuild front door, restore fan light and diamond pane windows
- replace parquet flooring with strip oak
- renovate Women's Head
- rewire Pit and Dorm floors
- replaster walls
- overhaul plumbing
- replace porch railings, balustrade, and trim
- replace all personal room furniture

### \$50,000

- renovate kitchen
- rewire electrical system for the two main floors of the house
- repair windows and add storms



# The Campaign for 259 Committee

Dave Burmaster MIT '69  
Jan-Willem Maessen PC '89  
Alice Leung PC '89  
Matt Condell PC '91  
Marcus Sarofim PC '92  
Hannah Jang-Condell PC '93  
Barry Davis PC '95  
Emily Marcus PC '98 Spring  
Anne Griner PC '99



Traditional Welcome, 1968



Lunch on the front porch, 1977

## Class Campaign Captains

Sara Barron PC '98  
Marleigh Norton PC '98 Spring  
Sam Hoolihan PC '97  
Matt Alvarado PC '96  
Barry Davis PC '95  
Ingrid Ulbrich PC '94  
Jeannie Markowitz PC '93  
Marcus Sarofim PC '92  
Matt Condell PC '91  
J. Michael Andresen PC '90  
Satyen Shah PC '89  
Kim Heroy-Rogalski and Greg Rogalski PC '88  
Greg Dancer PC '87  
Chris Majoros PC '86  
Alice Welch PC '85  
Tina Voelker PC '84  
Bob Gauthier PC '83

## Class Campaign Captains

Bill Herlan PC '82  
Corbin Covault PC '81  
Deb Summa PC '80  
Beth MacKenzie PC '79  
Leo DaCosta PC '78  
Michel Baylocq PC '77  
Hugh McManus PC '76  
Spike Helman PC '75  
Phil Dordai PC '74  
Kim Roddis and Lindsey Spratt PC '73  
Carol McGuire PC '71  
Jim Gust PC '70  
Dick Myrick MIT '71, PC '67  
David Asbell MIT '70, PC '66  
David Burmaster MIT '69, PC '65  
John Fee MIT '68, PC '64  
Larry Stark MIT '65



Keith Milkove, Lissa Martinez, Gail Alter, Bob Liu, Larry Hardy, and Stew Roberts



Steve Hazlerig and Hugh McManus